

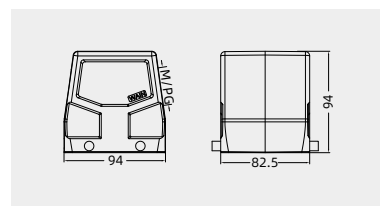
HV32B Metal hoods/housings - for high voltage inserts(HVE Series)

Degree of protection: IP65

Hoods, side entry



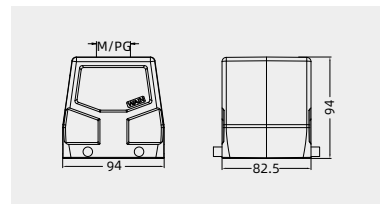
Thread	Designation	Order No.
M32	WV32B-SE-4B-M32	124 132 530 1001
M40	WV32B-SE-4B-M40	124 132 530 1002
PG29	WV32B-SE-4B-PG29	124 132 530 1003
PG36	WV32B-SE-4B-PG36	124 132 530 1004



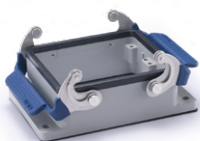
Hoods, top entry



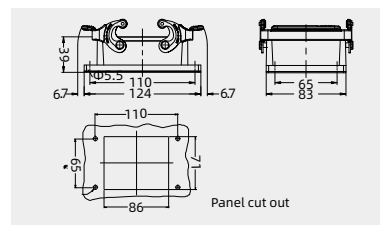
Thread	Designation	Order No.
M32	WV32B-TE-4B-M32	124 132 430 1001
M40	WV32B-TE-4B-M40	124 132 430 1002
M50	WV32B-TE-4B-M50	124 132 430 1003
PG29	WV32B-TE-4B-PG29	124 132 430 1004
PG36	WV32B-TE-4B-PG36	124 132 430 1005
PG42	WV32B-TE-4B-PG42	124 132 430 1006



Bulkhead mounted housings



Thread	Designation	Order No.
---	HV32B-BK-2L/SC	124 032 341 1001

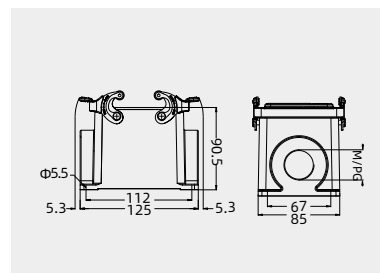


Please refer to page 15-02 for choosing proper model of lock.

Surface mounted housings



Thread	Designation	Order No.
M32	HV32B-SF-2L/SC-M32	124 032 241 1004
2M32	HV32B-SF-2L/SC-2M32	124 032 241 1024
M40	HV32B-SF-2L/SC-M40	124 032 241 1005
2M40	HV32B-SF-2L/SC-2M40	124 032 241 1025
PG29	HV32B-SF-2L/SC-PG29	124 032 241 1012
2PG29	HV32B-SF-2L/SC-2PG29	124 032 241 1032
PG36	HV32B-SF-2L/SC-PG36	124 032 241 1013
2PG36	HV32B-SF-2L/SC-2PG36	124 032 241 1033

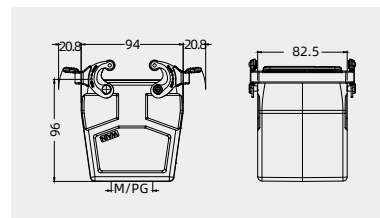


Please refer to page 15-02 for choosing proper model of lock.

Housings, cable to cable



Thread	Designation	Order No.
M32	WV32B-CCT-2L/SC-M32	124 132 741 1001
M40	WV32B-CCT-2L/SC-M40	124 132 741 1002
PG29	WV32B-CCT-2L/SC-PG29	124 132 741 1003
PG36	WV32B-CCT-2L/SC-PG36	124 132 741 1004
PG42	WV32B-CCT-2L/SC-PG42	124 132 741 1005

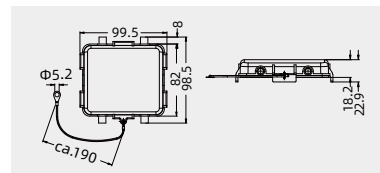


Please refer to page 15-02 for choosing proper model of lock.

Protection covers



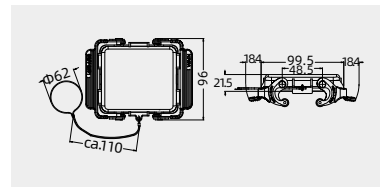
Connect way	Designation	Order No.
	H32B-MCV-4B/2	111 032 030 8102



Protection covers



Connect way	Designation	Order No.
	H32B-MCV-2L/SC.1S	111 032 041 8101



Please refer to page 15-02 for choosing proper model of lock.